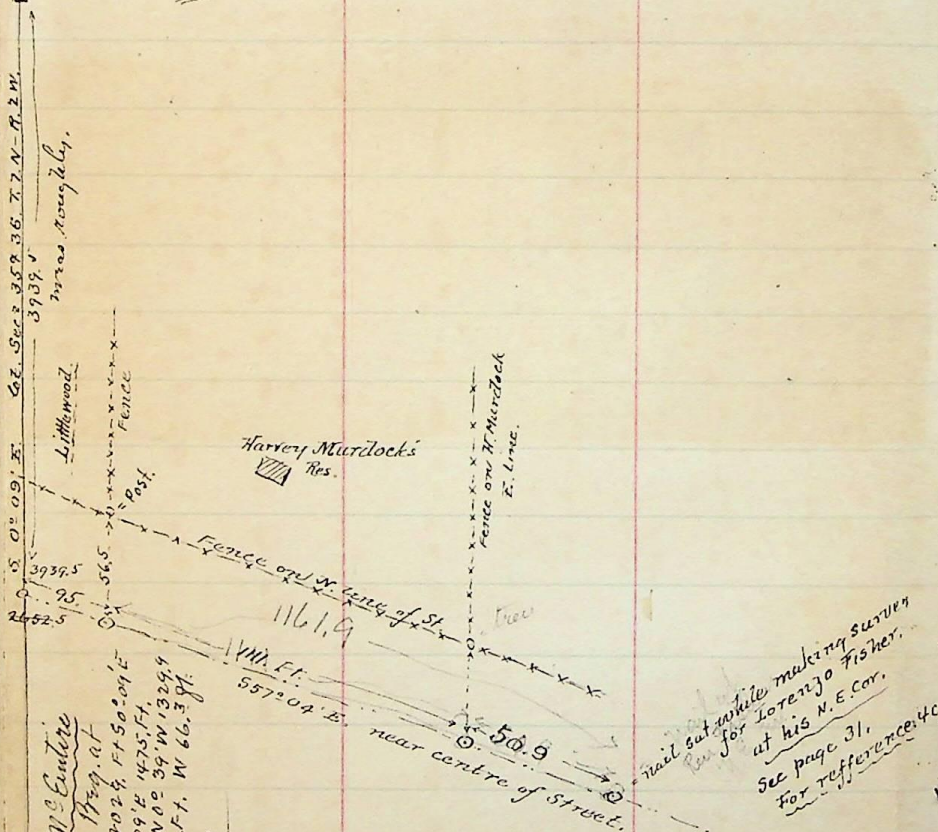


October 21-1896.

Oct. 22-1896.

N 40° 48' E →  
to Belmont Plk.  
N.W. Cor. Sec. 36.  
See page 44.

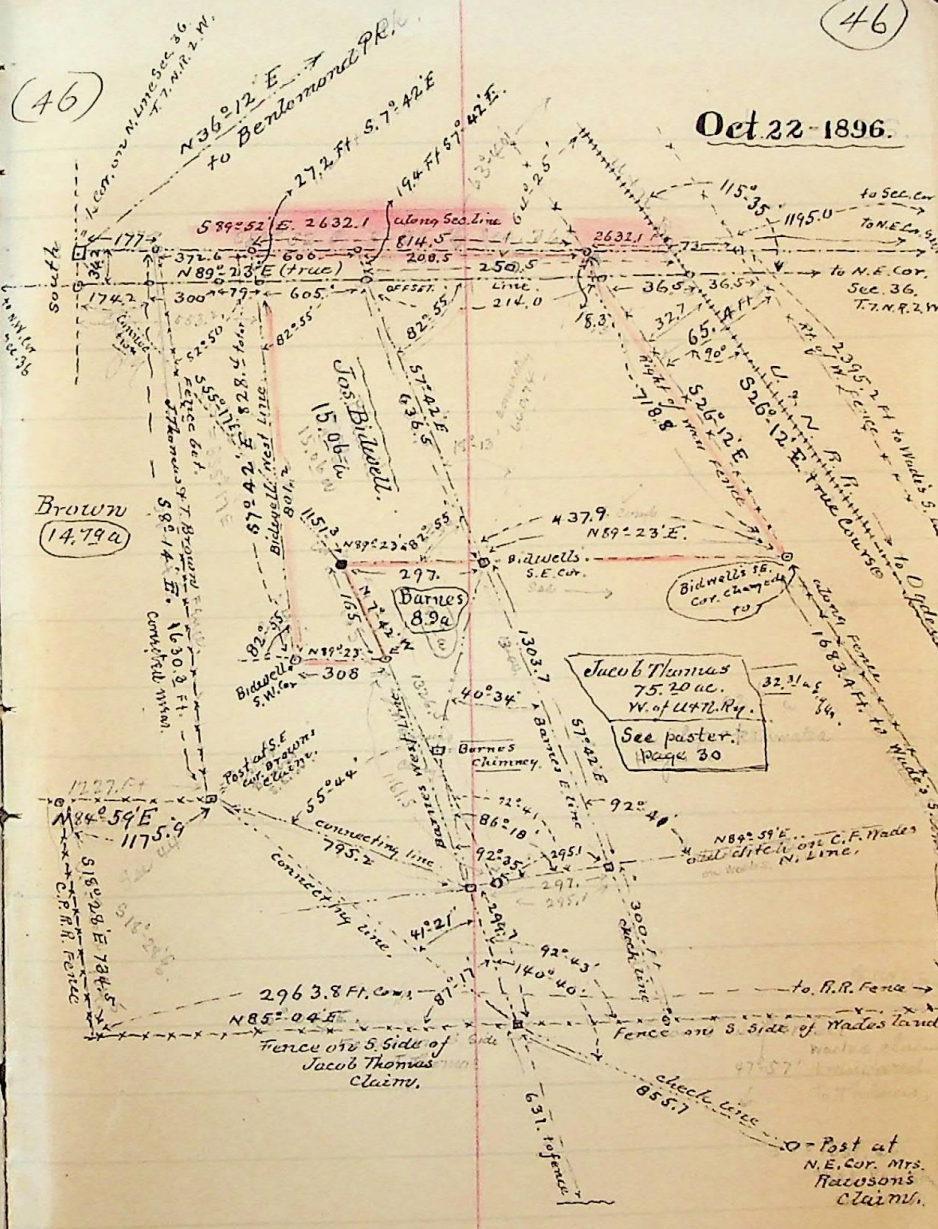


Description of Wm. F. McEntire  
 Pt. Sec. 36, T.7.N., R.2.W., 1899, at  
 from N.W. Cor. Sec. 36, 202.4 ft. S 50° 09' E  
 370° 27' E 80.5 ft., N 00° 39' W 132.9 ft.  
 to N.W. Cor. Sec. 36, 168.5 ft. W 66° 39' E  
 to N.W. Cor. Sec. 36, 2.23 ac.  
 mailed.

See plat Book  
 page 140

Desc. of Wm. McEntire's school land, Pt. Sec. 36,  
 T.7.N.-R.2.W. Beg. at point N 52° 49' W 598.3 Ft.  
 From S.E. Cor. of S.W. 1/4 Sec. 36, turning thence  
 S. 80° 10' W 383.3 Ft. to N. side Co. Road, - N 56° 44' W  
 146.3 Ft. along N. side of Co. Road, thence N 02° 45' E  
 1410.1 Ft. along E. side of Alley, thence N 89° 40' E  
 800.9 Ft. to point S.D. Pt. W. at R.H. from Cent. C.P.R.  
 S 19° 28' E 965. Ft. per. to cent. side R.R., S 38° 37' W  
 531.7 on N. side ally, S 51° 35' W. 100. Ft. in N. side  
 ally, S 80° 10' W. 217.7 Ft. N. side ally to N.W. Cor. 31.16 a

Description of Jas. Barne's claim in Sec. 36,  
 T.7.N.-R.2.W. - Beg. at point S 55° 17' E. 1151.3 Ft.  
 Dist. from N.W. Cor. of N.E. 1/4 Sec. - Thence  
 N 89° 23' E. 297.0 ft. - S 7° 42' E 1303.7 Ft -  
 S 84° 59' W. 295.1 ft. - N 7° 42' W 1326.5 Ft to  
 beg. 8.9 acres.



Note! The E. line of Sec. 36. bears 50° 33' W.

